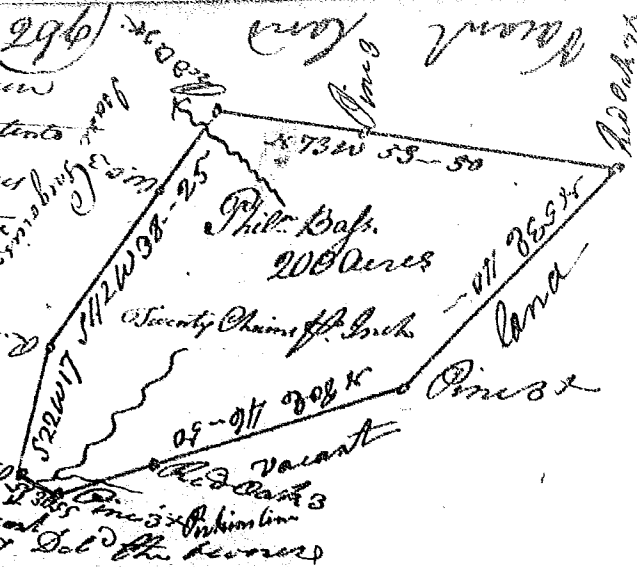
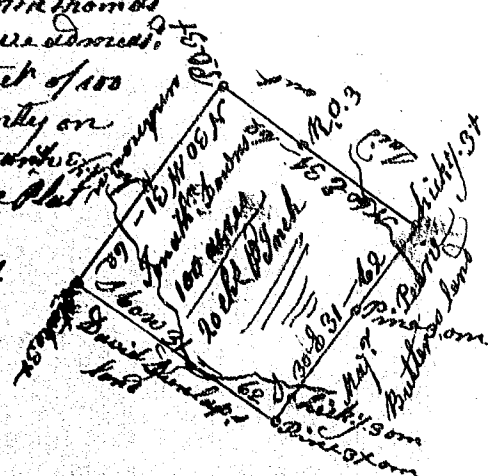


State of South Carolina Pursuant to 296  
 a warrant from John Thomas Esq  
 who I have measured & laid out unto  
 Philimon Baps a tract of 200 Acres  
 of land situate in 96 district on  
 the branches of Gregory Creek of the  
 S. side of Broad River of both  
 such form as the buttings  
 and Boundings as the  
 above plat Represents  
 Surveyed the 17<sup>th</sup> August 1787



Chas Sims of ...  
 Recorded the 24<sup>th</sup> August 1787 Del the Devers

30 Caroline Pursuant to a warrant from John Thomas  
 Comr of locations dated 30<sup>th</sup> Nov. 1787, I have measured  
 and laid out unto Jonathan Downs tract of 100  
 acres of land, in 96 district Laurens County on  
 a branch of Needy river, call. Dunlops branch  
 and hath shape and marks as the above plat  
 Represents. Survey. 9<sup>th</sup> Dec. 1787,  
 Recorded 22. Jan. 1788. Jonathan Downs De  
 Del by



Pursuant to a warrant from  
 John Thomas Esq Comr of loca  
 tions Dated the 30<sup>th</sup> Nov. 1787  
 I have measured & laid out  
 unto Jonathan Downs a tract of land

200 Acres land situate in Needy in Paul Laurens  
 County on a Branch of Goldenbecker called the horachon  
 fork & hath such shape formis Mark Buttings & Boundings  
 as the above Plat Represents  
 Surveyed the 8<sup>th</sup> Dec 1787  
 Del to ... Allen Recorded the 22<sup>nd</sup> Jan 1788